

Using POLY Filters with GSAK

The purpose of this file is to illustrate how you can isolate Geocaches that are located with the Regional Boundaries of Ontario using OGA – POLY – Region files found on the OGA site.

The same approach can be used for POLY Filters created for other areas.

This file assumes a basic knowledge of how to use GSAK. GSAK is the official GPX and LOC file handling program of the OGA. For more information regarding GSAK, see the GSAK website at www.gsak.net

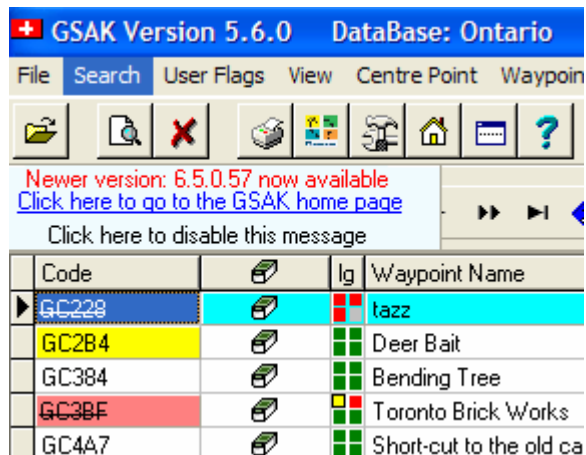
What you will need to use this file

- GSAK (Geocaching Swiss Army Knife)
- An “OGA – POLY” file from the OGA site
- A “POCKET QUERY” from Geocaching.com or similar

Step 1 – Open GSAK

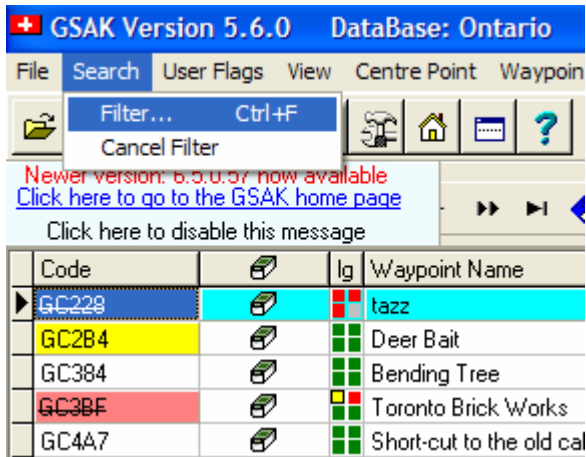
Step 2 – Load your POCKET QUERY into GSAK, or use an existing Database.

Step 3 – Click on the word SEARCH



<continued>

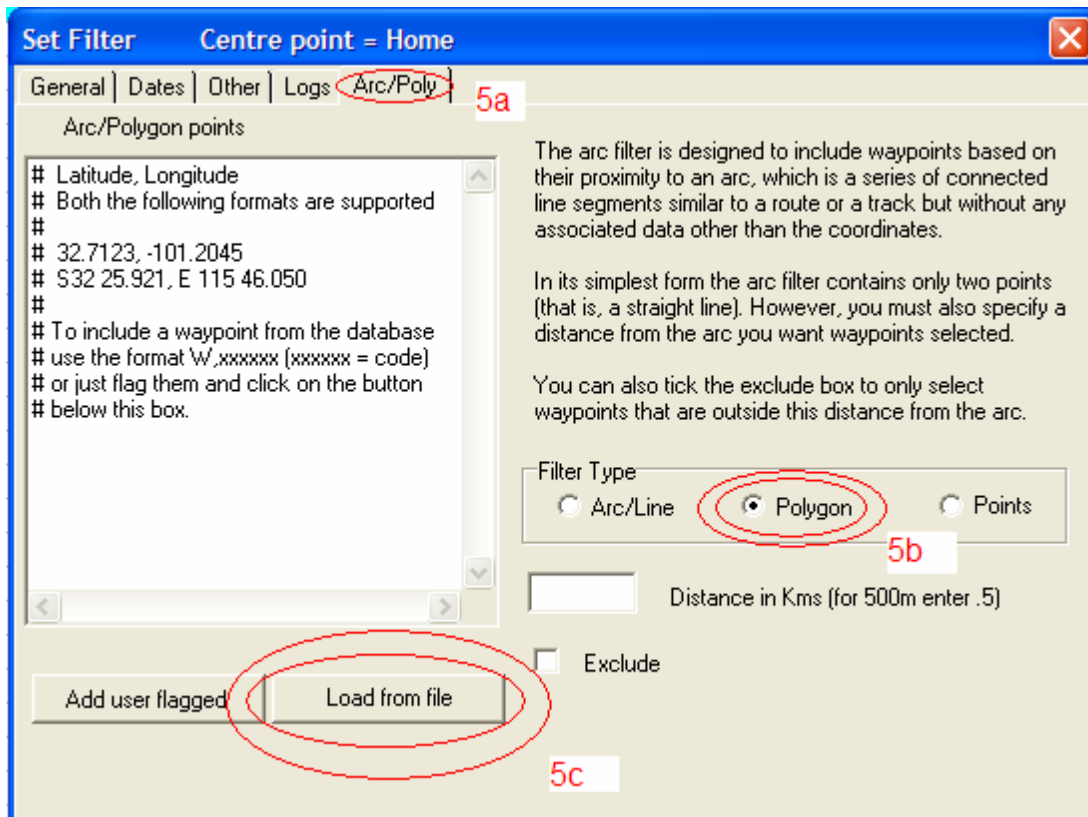
Step 4 – Select FILTER



Step 5a – Select the ARC/POLY Tab

Step 5b – Select “Polygon”

Step 5c – Click the “Load from file” box”



<continued>

Step 6 – Loading the OGA - POLY Filter

Browse to the location of the OGA – POLY filter you wish to use

Select it with your mouse then click OPEN

You will see the latitude and longitude of the POLY Filter appear

Click on GO in the bottom left corner to run the Filter and isolate the Geocaches that are within the boundaries of the Region you have chosen.

The screenshot shows the 'Set Filter' dialog box in a geocaching application. The dialog is titled 'Set Filter' and 'Centre point = Home'. It has tabs for 'General', 'Dates', 'Other', 'Logs', and 'Arc/Poly'. The 'Arc/Poly' tab is selected, showing a list of 'Arc/Polygon points' with their coordinates. The 'Go' button at the bottom left is circled in red. The background shows a list of waypoints with columns for 'Waypoint Name', 'Diff', 'Tern', and 'Placed By'.

Waypoint Name	Diff	Tern	Placed By
tazz	1.5	1.0	walsh-harris
Deer Bait			
Bending Tree			
Toronto Brick Works			
Short-cut to the old cabin			
The Dingle			
Swift Rapids			
Webster's Falls Hike (Ontario)			
Lakeshore Bootie			
Northern Lights			
Goose Heaven (Ontario)			
Geocache			
The Bog			
Up the Creek			
Algoma1			
Down by the old Mill Creek			
Toronto Outer Harbour			
Cedar Beaver			
Dingman's Dilemma			
Algonquin By Canoe			
Algonquin On Foot			
Algoma2			
Balls Falls Rapids			
Sibthorp			
Surf & Turf #2			
14 Humber West Scout Group			
"T"			
Blackburn Body			
Geocache			
Huckleberry Rock Cut Cache			

That is all there is to it.

- This file was created by the Ontario Geocaching Association (OGA) on the 16th of December, 2005
- Please join the Ontario Geocaching Association at www.ontgeocaching.com
- This file is for personal use only and may not be altered in any fashion or used for any purpose other than personal use without written permission from OGA.
- Should you wish to place this file on your website, you have permission as long as the file is not altered in any fashion from this existing version, and you provide the following text on the same web page of your website "Created by the Ontario Geocaching Association" as a link to the OGA Website.
- This file is provided 'as is' and OGA will not accept responsibility for any issues that result from its use.